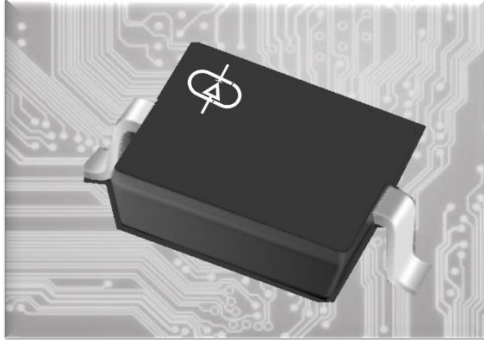


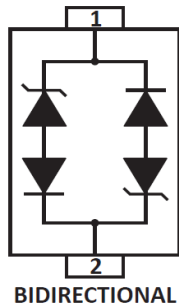
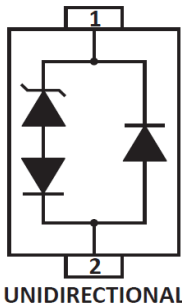
## ULTRA LOW CAPACITANCE TVS ARRAY

### DESCRIPTION:



The ALPAMLC23XXA/CA (UNI/BI) Series are ultralow capacitance transient voltage suppressor array with AEC-Q101 approved series provides both EFT and ESD protection to the application where it is designed in. This series is available in both unidirectional and bidirectional configurations and is rated at 350 Watts for an 8/20 $\mu$ s waveshape.

The ALPAMLC23XXA/CA Series meets IEC 61000-4-2 (ESD) and IEC 61000-4-4 (EFT) requirements. At higher operating frequencies or faster edge rates, insertion loss and signal integrity are a major concern. This series offers a ultralow capacitance of 3pfd max and low leakage current of 1 $\mu$ A in a miniature SOD-323 package.



### FEATURES:

- **AEC-Q101 approved.**
- Compatible with IEC 61000-4-2 (ESD): Air  $\pm$ 15kV, Contact  $\pm$ 8kV
  - Exceeds Level 4: Handles 20kV Contact & 25kV Air Discharge
- Compatible with IEC 61000-4-4 (EFT): 40A - 5/50ns
- Compatible with IEC 61000-4-5 (Surge)
- Compatible with ISO 10605 (ESD): 330pF/2k $\Omega$ ,  $\pm$ 20kV Contact
- 350 Watts Peak Pulse Power per Line ( $t_p = 8/20\mu$ s)
- Replacement for MLV (0805)
- Unidirectional & Bidirectional Configuration
- Protects One Power or I/O Port
- ESD Protection > 25kV
- Low Clamping Voltage
- Available in Multiple Voltages Ranging From 3V to 24V
- Ultra Low Capacitance: 3pF (Typical)
- RoHS Compliant
- REACH Compliant

### APPLICATIONS:

- Automotive application



**TYPICAL DEVICE CHARACTERISTICS**

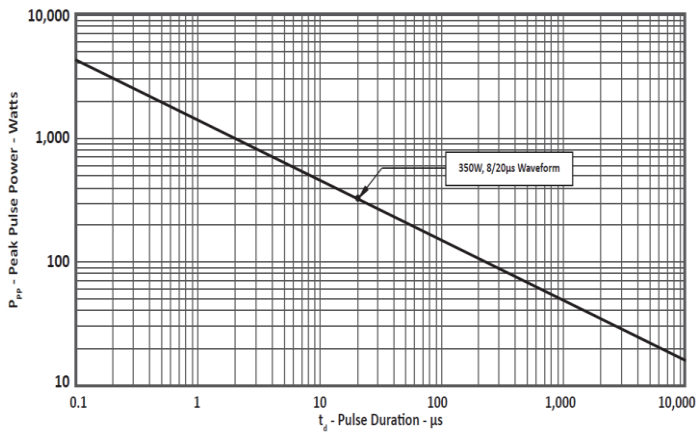
MAXIMUM RATINGS @ 25°C Unless Otherwise Specified			
PARAMETER	SYMBOL	VALUE	UNITS
Peak Pulse Power (tp = 8/20µs) - See Figure 1	P <sub>PP</sub>	350	Watts
Operating Temperature	T <sub>A</sub>	-55 to 150	°C
Storage Temperature	T <sub>STG</sub>	-55 to 150	°C

ELECTRICAL CHARACTERISTICS PER LINE @ 25°C Unless Otherwise Specified					
PART NUMBER (Note 1 -2)	RATED STAND-OFF VOLTAGE  V <sub>WM</sub> VOLTS	MINIMUM BREAKDOWN VOLTAGE  @ 1mA V <sub>(BR)</sub> VOLTS	MAXIMUM CLAMPING VOLTAGE (Fig. 2) @ IP = 1A V <sub>C</sub> VOLTS	MAXIMUM LEAKAGE CURRENT  @V <sub>WM</sub> I <sub>D</sub> µA	TYPICAL CAPACITANCE  @0V, 1MHz C pF
ALPAMLC2303A	3.3	4.0	7.0	1	3
ALPAMLC2303CA	3.3	4.0	7.0	1	3
ALPAMLC2305A	5.0	6.0	9.8	1	3
ALPAMLC2305CA	5.0	6.0	9.8	1	3
ALPAMLC2308A	8.0	8.5	13.4	1	3
ALPAMLC2308CA	8.0	8.5	13.4	1	3
ALPAMLC2312A	12.0	13.3	19.0	1	3
ALPAMLC2312CA	12.0	13.3	19.0	1	3
ALPAMLC2315A	15.0	16.7	24.0	1	3
ALPAMLC2315CA	15.0	16.7	24.0	1	3
ALPAMLC2318A	18.0	20.0	29.0	1	3
ALPAMLC2318CA	18.0	20.0	29.0	1	3
ALPAMLC2324A	24.0	26.7	43.0	1	3
ALPAMLC2324CA	24.0	26.7	43.0	1	3

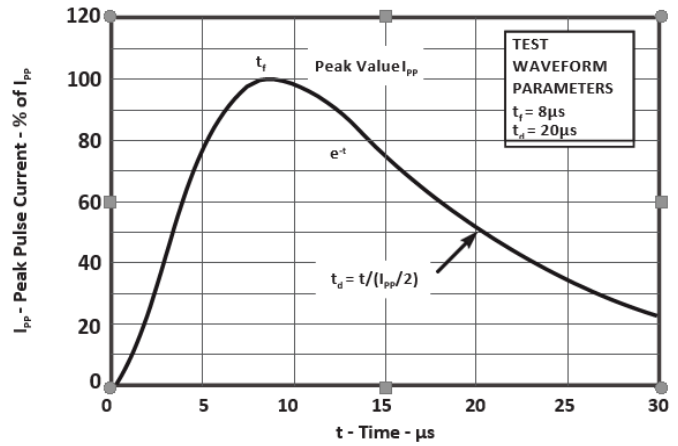
**NOTES**

- Part numbers with "CA" suffix are bidirectional devices, i.e., ALPAMLC2324CA.
- Unidirectional Only: Positive potential is applied from pin 1 to 2.

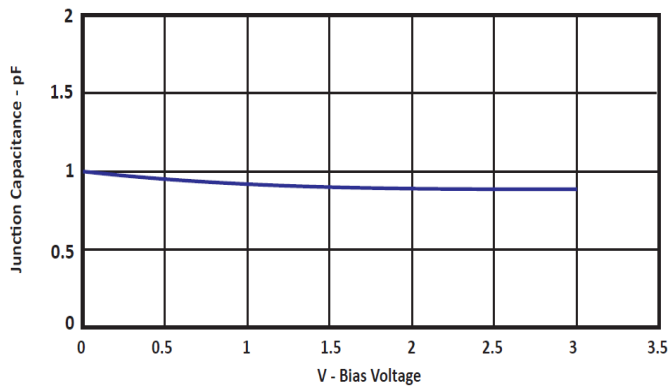
**TYPICAL DEVICE CHARACTERISTICS CURVES**



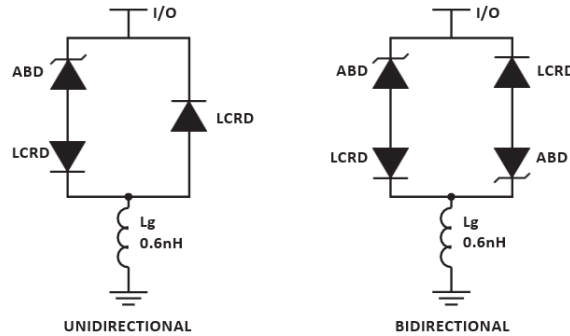
**Fig1. PEAK PULSE POWER VS PULSE TIME**



**Fig2. PULSE WAVEFORM**



**Fig3. TYPICAL JUNCTION CAPACITANCE - BIAS VOLTAGE**

**SPICE MODEL**
**FIGURE 1  
SPICE MODEL**


ABD - Avalanche Breakdown Diode (TVS)

LCRD: Low Capacitance Rectifier Diode

Lg - Lead Inductance

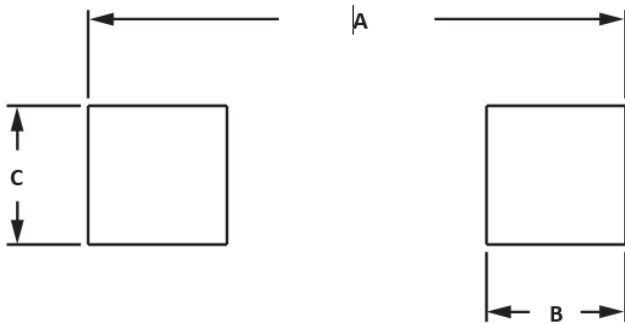
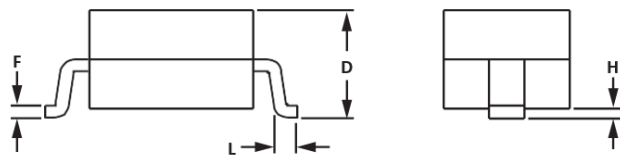
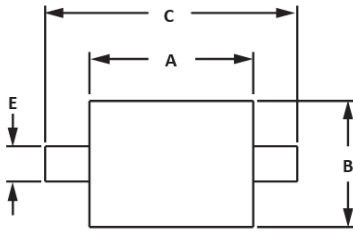
**TABLE 1 - SPICE PARAMETERS**

PARAMETER	UNIT	ABD(TVS)	LCRD
BV	V	See Table 2	200
IBV	μA	1	0.01
C <sub>jo</sub>	pF	See Table 2	2
I <sub>S</sub>	A	See Table 2	1E-11
V <sub>j</sub>	V	0.6	0.6
M	-	0.33	0.33
N	-	1	1
R <sub>S</sub>	Ohms	See Table 2	0.75
TT	s	1E-8	1E-9
EG	eV	1.11	1.11

**TABLE 2 - ABD SPECIFIC SPICE PARAMETERS**

PART NUMBER	B <sub>V</sub> (VOLTS)	C <sub>jo</sub> (pF)	I <sub>S</sub> (AMPS)	R <sub>S</sub> (OHMS)
ALPAMLC2303A & ALPAMLC2303CA	4.0	438	1E-11	0.21
ALPAMLC2305A & ALPAMLC2305CA	6.0	284	1E-11	0.14
ALPAMLC2308A & ALPAMLC2308CA	8.5	146	1E-11	0.28
ALPAMLC2312A & ALPAMLC2312CA	13.3	123	1E-13	0.40
ALPAMLC2315A & ALPAMLC2315CA	16.7	102	1E-13	0.52
ALPAMLC2318A & ALPAMLC2318CA	20.0	80	1E-13	0.80
ALPAMLC2324A & ALPAMLC2324CA	26.7	61	1E-13	1.54

**PACKAGE INFORMATION**



**OUTLINE DIMENSIONS**

DIM	MILLIMETERS		INCHES	
	MIN	MAX	MIN	MAX
A	1.60	1.90	0.063	0.075
B	1.15	1.45	0.045	0.057
C	2.39	2.70	0.094	0.106
D	0.80	1.10	0.031	0.043
E	0.25	0.40	0.010	0.016
F	0.10	0.20	0.004	0.008
H	-	0.10	-	0.004
L	0.20	-	0.008	-

**NOTES**

1. Controlling dimension: millimeters.
2. Dimensioning and tolerances per ANSI Y14.5M, 1985.
3. Dimensions are exclusive of mold flash and metal burrs.

**PAD LAYOUT DIMENSIONS**

DIM	MILLIMETERS		INCHES	
	MIN	MAX	MIN	MAX
A	2.87	3.12	0.113	0.123
B	0.66	0.91	0.026	0.036
C	0.66	0.91	0.026	0.036

**NOTES**

1. Controlling dimension: millimeters.



Manufacturer ISO/TS 16949, ISO 9001 and ISO 14001 Certified

**ALPAMLC23XXA/CA Series**  
**(3V to 24V - UNI/BI)**  
**SOD-323**

## CUSTOMER NOTE:

### DISCLAIMER

The product information and the selection guide facilitates the selection of the ALPINESEMI™'s Semiconductor Device(s) best suited for application in your product(s) as per your requirement. It is recommended that you completely review the Data sheet(s) so as to confirm that the Device(s) meets functionality parameters for your application. The information furnished on the Data Sheet and the ALPINESEMI™'s Web Site is believed to be accurate and reliable at the time of preparation of this document. ALPINESEMI™ however, does not assume any inaccuracies that may arise when the components are mounted and removed. Furthermore, ALPINESEMI™ does not assume liability whatsoever, arising out of the application or the use of any of ALPINESEMI™'s product(s). Neither, does it convey any license under its patent rights nor the rights of others. These products are not guaranteed for use in life saving/support appliances or systems. ALPINESEMI™'s customers using these products (either as individual Semiconductor Devices or incorporated in their end products), in any life saving/support appliances or systems or applications do so at their own risk and ALPINESEMI™ will not be responsible in any way(s) for any damage(s) resulting from such use.

Please check the website [www.alpinesemi.com](http://www.alpinesemi.com) for continues updates and revision of datasheets.

DESIGN CHANGES: ALPINESEMI™ strives for continuous improvement and reserves the right to change the specifications of its products without prior notice. ALPINESEMI™ reserves the right to discontinue product lines without prior notice. Any product selection is a recommendation based on best understanding of such product(s) by our engineers. However, buyers are advised to rely on their own judgment for such selection of the products.

ALPINESEMI™ makes no warranty, representation or guarantee regarding the suitability of its products for any particular applications. Neither does ALPINESEMI™ assume any liability arising out of the applications nor the use of such products. ALPINESEMI™ specifically disclaims all liabilities either consequential or incidental.

All rights of the product and datasheet are reserved to ALPINESEMI™.

All logos and information provided in the datasheets are for reference only. Any registered and/or trademark/logos belonging to respective companies be the property of those companies. ALPINESEMI™ extends the courtesy to them, if any of the information found in its datasheet.

### Component Disposal Instructions

1. ALPINESEMI™ Semiconductor Devices are RoHS compliant and hence customers are requested to dispose as per the prevailing Environmental Legislation put forth in their specific country.
2. In Europe, please dispose as per EU Directive 2002/96/EC on Waste Electrical and Electronic Equipment (WEEE).



[sales@alpinesemi.com](mailto:sales@alpinesemi.com)  
[www.alpinesemi.com](http://www.alpinesemi.com)